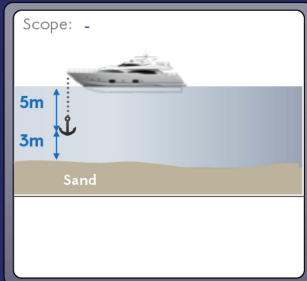


Diagram 1

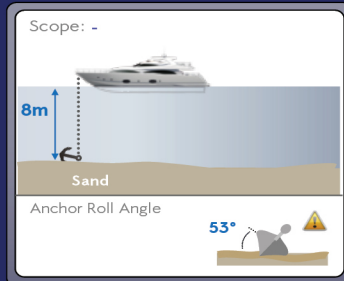
Functionalities of AnchorGuardian



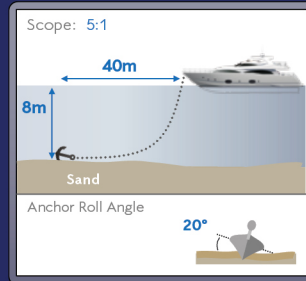
Whilst laying the anchor



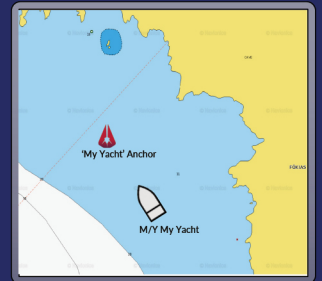
Depth of anchor
Distance to sea floor
Sediment type



Notification when anchor reaches the sea floor
Roll angle of anchor



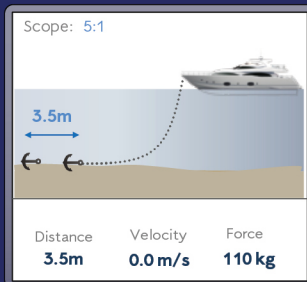
Scope



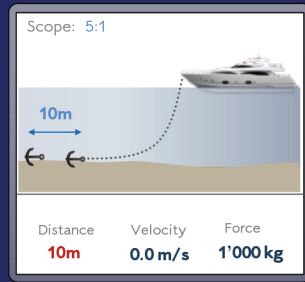
Dynamic anchor position on electronic chart
Anchor position as AIS signal



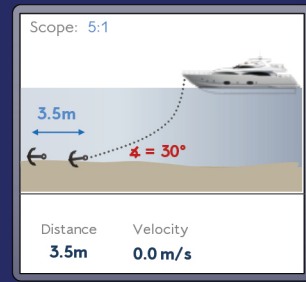
While at anchor



Absolute dragging distance
Dragging velocity
Force at anchor



Alarms (dragging distance, velocity, force)



Chain angle at anchor
Chain angle alarm



Dynamic anchor hold prediction



While lifting the anchor

